

# Equity Update for the Levy Oversight Committee



# SDOT Vision, Mission, and Core Values

**Vision:** Seattle is a thriving equitable community powered by dependable transportation

**Mission:** to deliver a transportation system that provides safe and affordable access to places and opportunities

Committed to **6 core values:**

- Equity
- Safety
- Mobility
- Sustainability
- Livability
- Excellence



# Seattle's Race and Social Justice Initiative goals

End institutional racism in City government

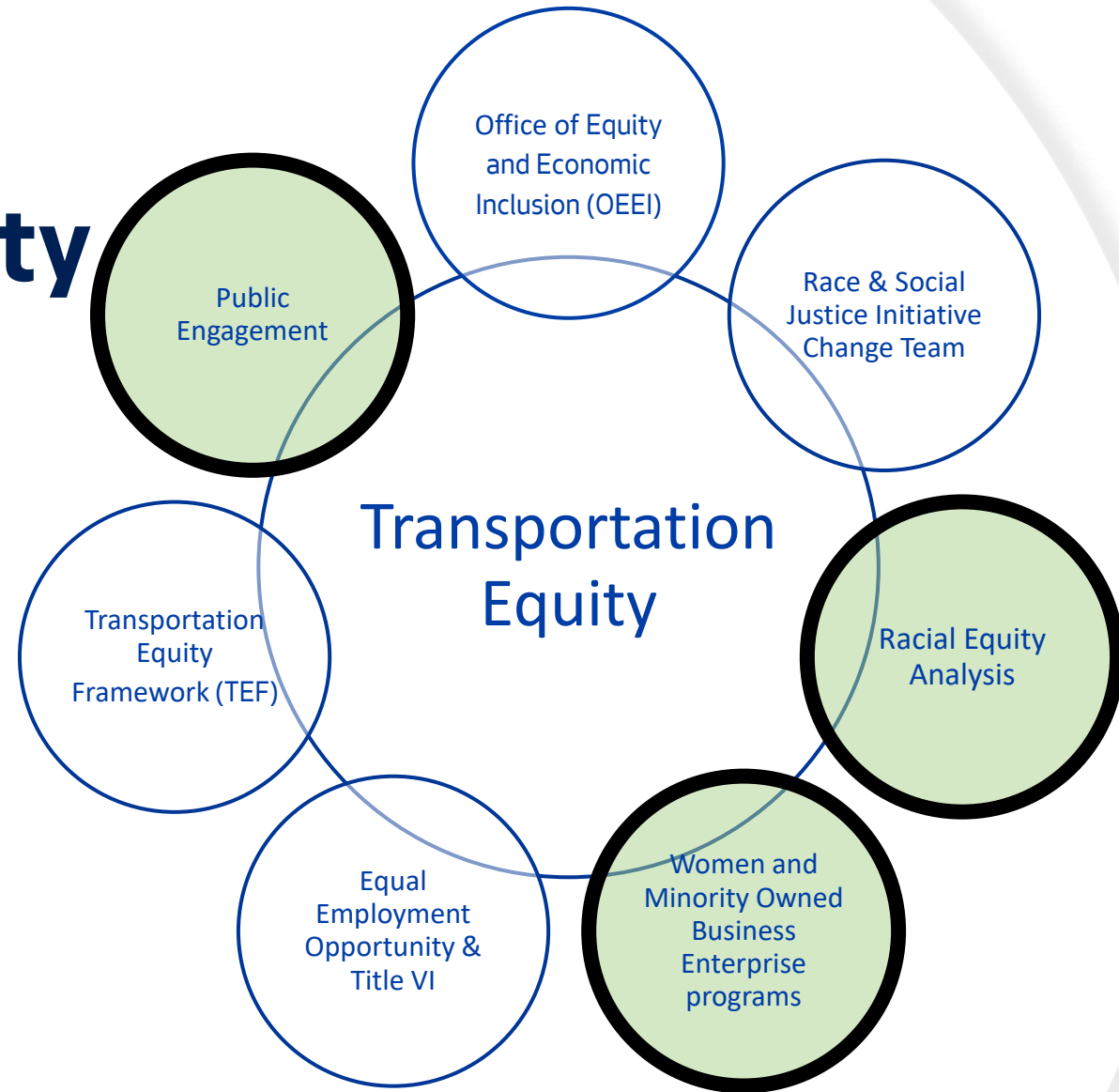
Promote inclusion and full participation of all residents

Partner with the community and other institutions to create racial equity

## SDOT RSJI vision

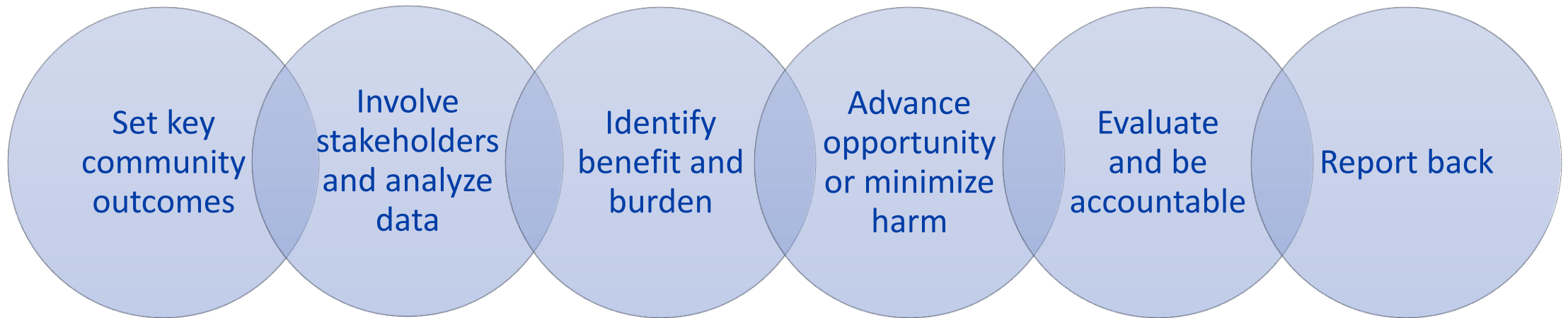
Through our work, SDOT will end institutional racism, biases, and inequity in our transportation system, workforce, and intersections with institutionally racist systems

# SDOT's approach to transportation equity



# Racial Equity Analysis

Racial Equity Toolkits (RETs) are questions used citywide to guide the evaluation of policies, projects, services, and budget issues to help identify and address racial equity impacts:



# Questions that guide the evaluation

- What are the racial demographics of those living in the area or impacted by the issue?
- How will the policy, initiative, program, or budget issue increase or decrease racial equity?
- How will you address the impacts (including unintended consequences) on racial equity?
- Full template is available [here](#)

# Racial Equity Analysis process

- Project and program managers work with a team of subject matter experts, data and mapping analysts, RSJI Change Team members, stakeholders
- Capital projects such as Delridge Way SW RapidRide H and Roosevelt RapidRide
- Processes such as the Covid-19 Impact Levy Assessment for the Levy to Move Seattle



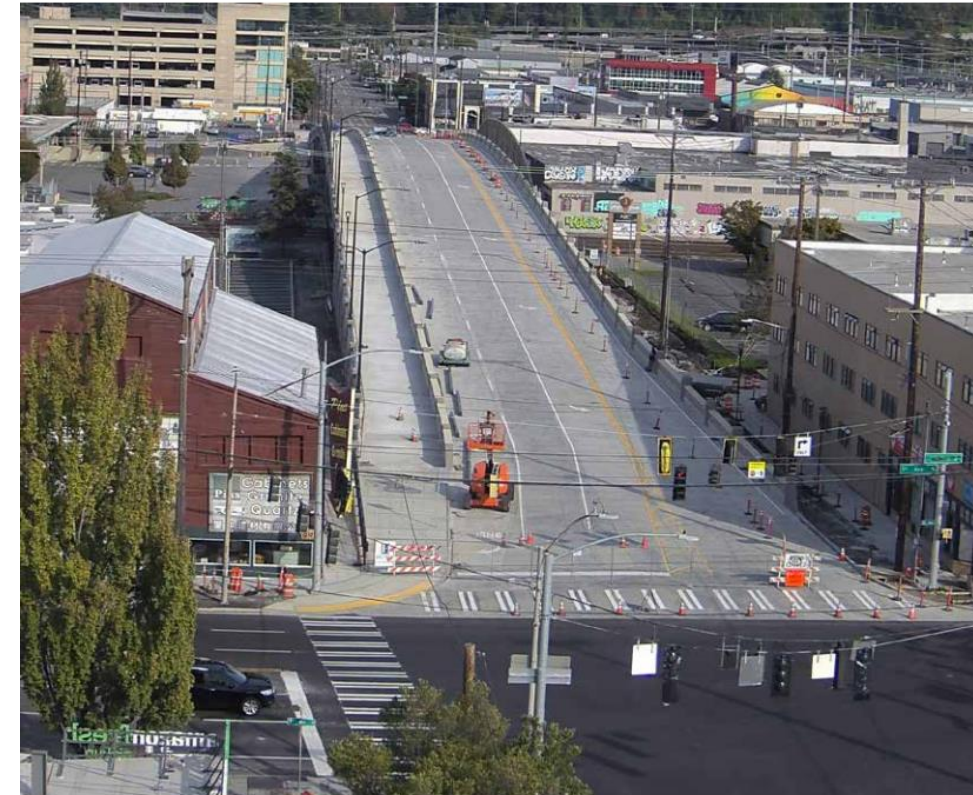
# Racial equity analysis & the Levy

Completed for the Covid-19 Impact Levy Assessment for the Levy to Move Seattle:

- Built on 2015 analysis completed as part of Levy development
- Engaged [Transportation Equity Workgroup](#) to provide community feedback on equity factors
- Used a data-driven approach combined with qualitative factors

Seattle Department of Transportation

## 2020 COVID-19 IMPACT ASSESSMENT: LEVY TO MOVE SEATTLE



January 2021





# 2021 Examples

- Bike and Scooter Share Program
  - Increase education and outreach to Seattle's BIPOC communities about how to access scooter share
- Seamless Seattle Pedestrian Wayfinding Program
  - Integrate non-English languages in specific areas
- Delridge Way SW RapidRide H Line Project (Levy project)
  - Provide transit service to employment centers

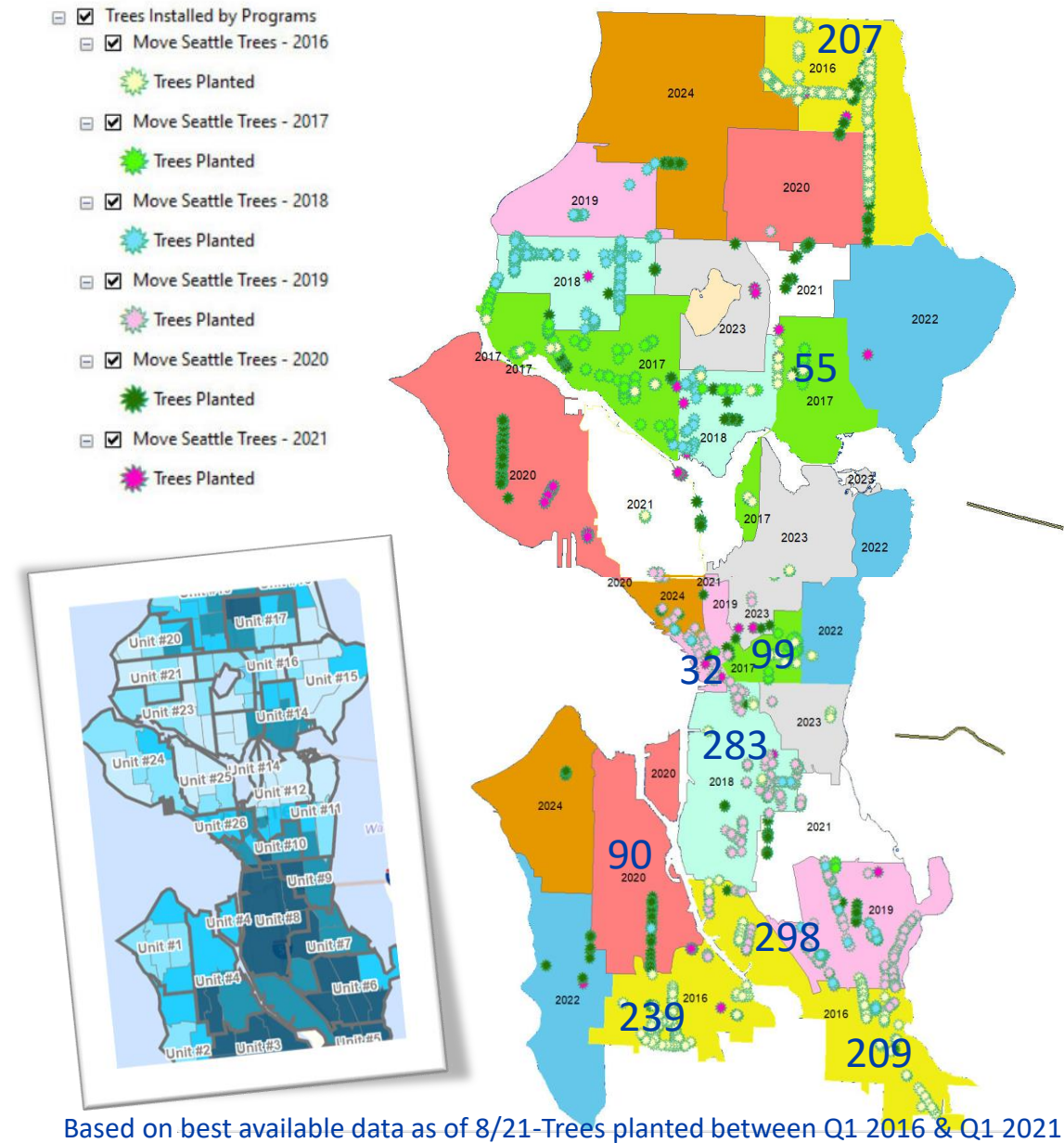
Pedestrian safety campaign  
lead by NONWHITEWORKS



# Highlight: Equity & trees

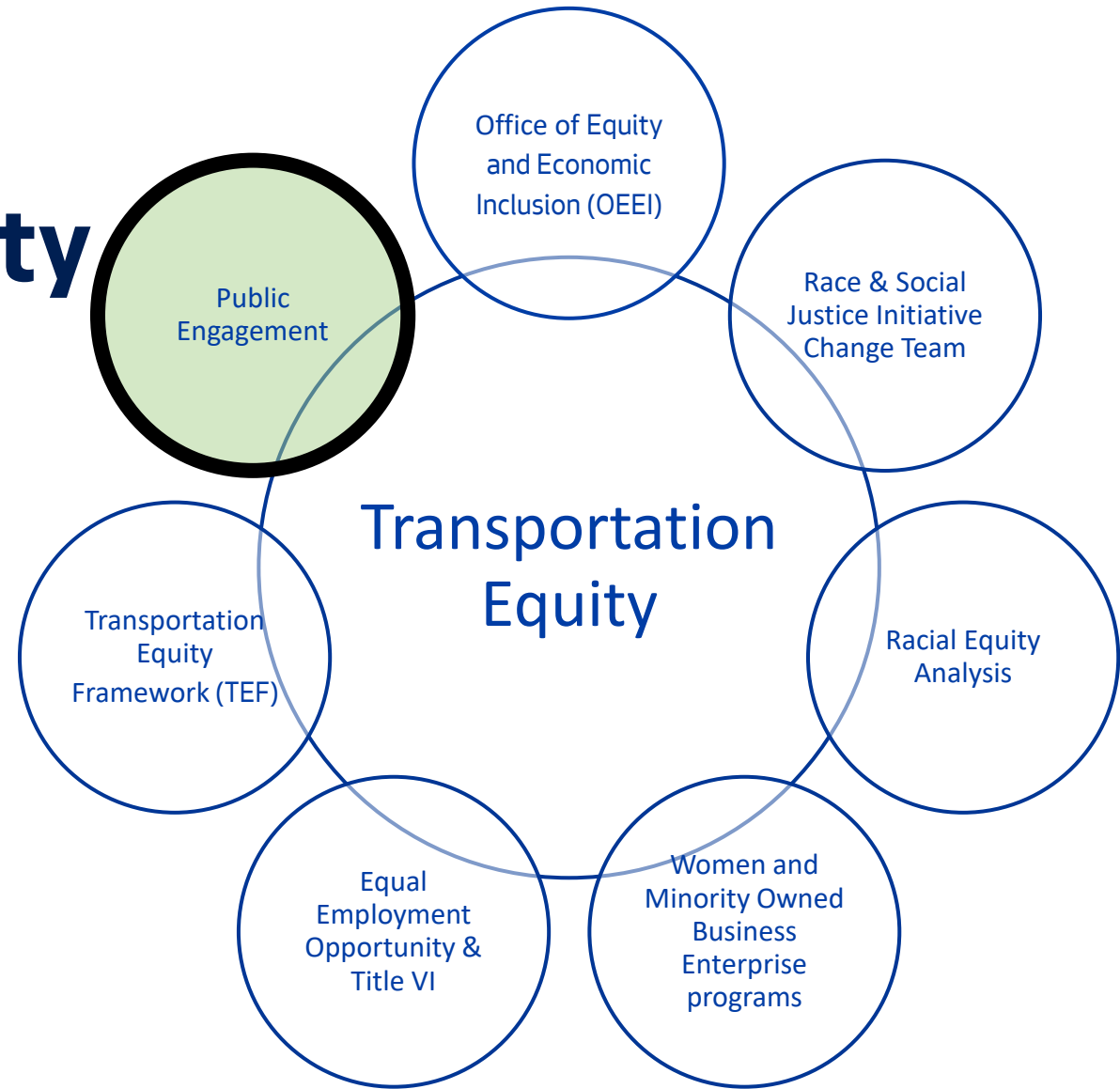
## 2016 Racial Equity Analysis:

- Analyze data: Inventory trees citywide and overlay on Racial and Social Equity Index Map
- Involve stakeholders: Partner with DON and survey community-based organizations
- Outcome / advance opportunity: Focus on the areas of most need early in Levy
- Evaluation: Prior to next transportation funding package gather input and confirm how to further equity



Based on best available data as of 8/21-Trees planted between Q1 2016 & Q1 2021

# SDOT's approach to transportation equity



# Engaging the public

We make engagement more inclusive by:

- Translating materials and sharing in multiple languages on radio, print media, web
- Partnering with the Department of Neighborhoods and the City's Community Liaisons (CL).
- Exploring compensation for some types of engagement
- Meeting people where they are at— shopping centers, community centers, etc.



資料簡報

## BEACON HILL (燈塔山) 單車路線

2020年7月

### 項目介紹

SDOT將分段修建一條從Dr. Jose Rizal Bridge (扶西-黎刺大橋) 至Beacon Ave S與39th Ave S交匯處的單車路線。第1段從Dr. Jose Rizal Bridge開始至S Spokane St, 第2段從S Spokane St開始至S Myrtle St, 第3段從S Myrtle開始至S 39th St。市府正在考慮一系列單車改進設施, 包括有保護設施的單車道以及社區綠道。施工預期將於2023年開始。

### 項目收益

此單車道將:

- 為騎單車的人士提供改進設施, 促進他們在東南西雅圖的出行安全。
- 為來自南金縣的人士提供更便利的單車路線連接, 並在東南西雅圖修建重要的單車基礎設施
- 將人們連接至輕軌、公共交通設施、步道, 以及一些Beacon Hill最熱門的社區目的地

### 預定進度

從2020年春季開始: 早期設計

2020年8月: 徵求社區對於第1段路線的回饋意見

2020年9月: 徵求社區對於第2段與第3段路線的回饋意見

2020年目前: 向附近居民、商家、社區成員與機構進行額外徵詢

2020年秋季: 公佈首選路線方案

2020年晚些時間: 完成30%的設計工作

2023年: 開始施工



建立新的單車連接, 創造更安全的街道

### 相關項目

我們正在與地區其他項目緊密協調, 其中包括:

- 12th Ave S Vision Zero (零傷亡願景) 項目
- S Columbia Way / S Alaska Street鋪面項目
- Stay Healthy Streets (保持健康街道) - Beacon Hill北部與南部

### BEACON HILL單車路線備選方案

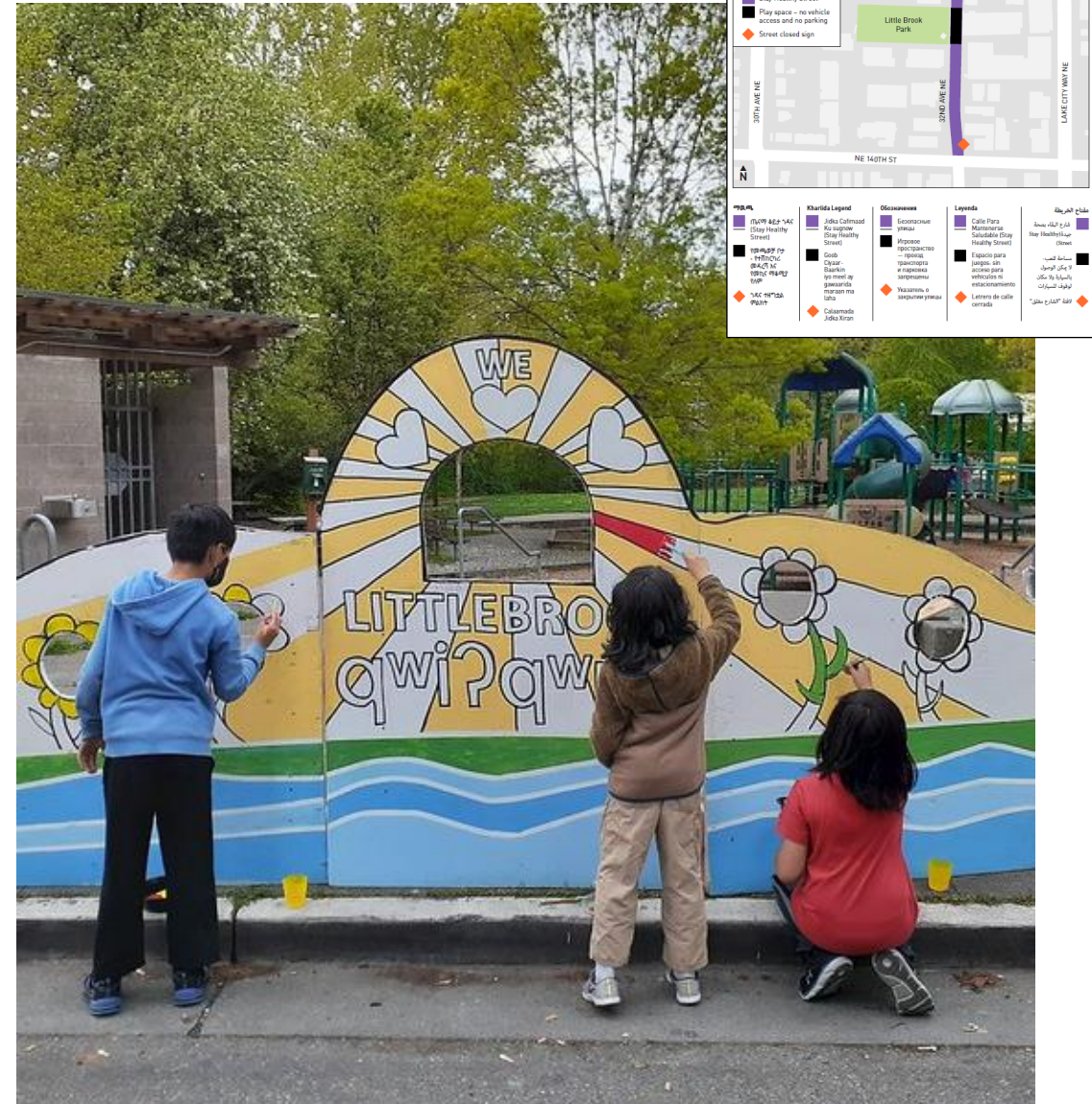
本項目將從Dr. Jose Rizal Bridge延伸至Beacon Ave S與39th Ave S的交匯處, 共包含三個路段的設計與施工。

項目資金來自於選民於2015年投票通過, 為期9年的 Levy to Move Seattle 稅收計畫。請至 [www.seattle.gov/LevytoMoveSeattle](http://www.seattle.gov/LevytoMoveSeattle) 了解更多有關該稅收計畫的資訊。

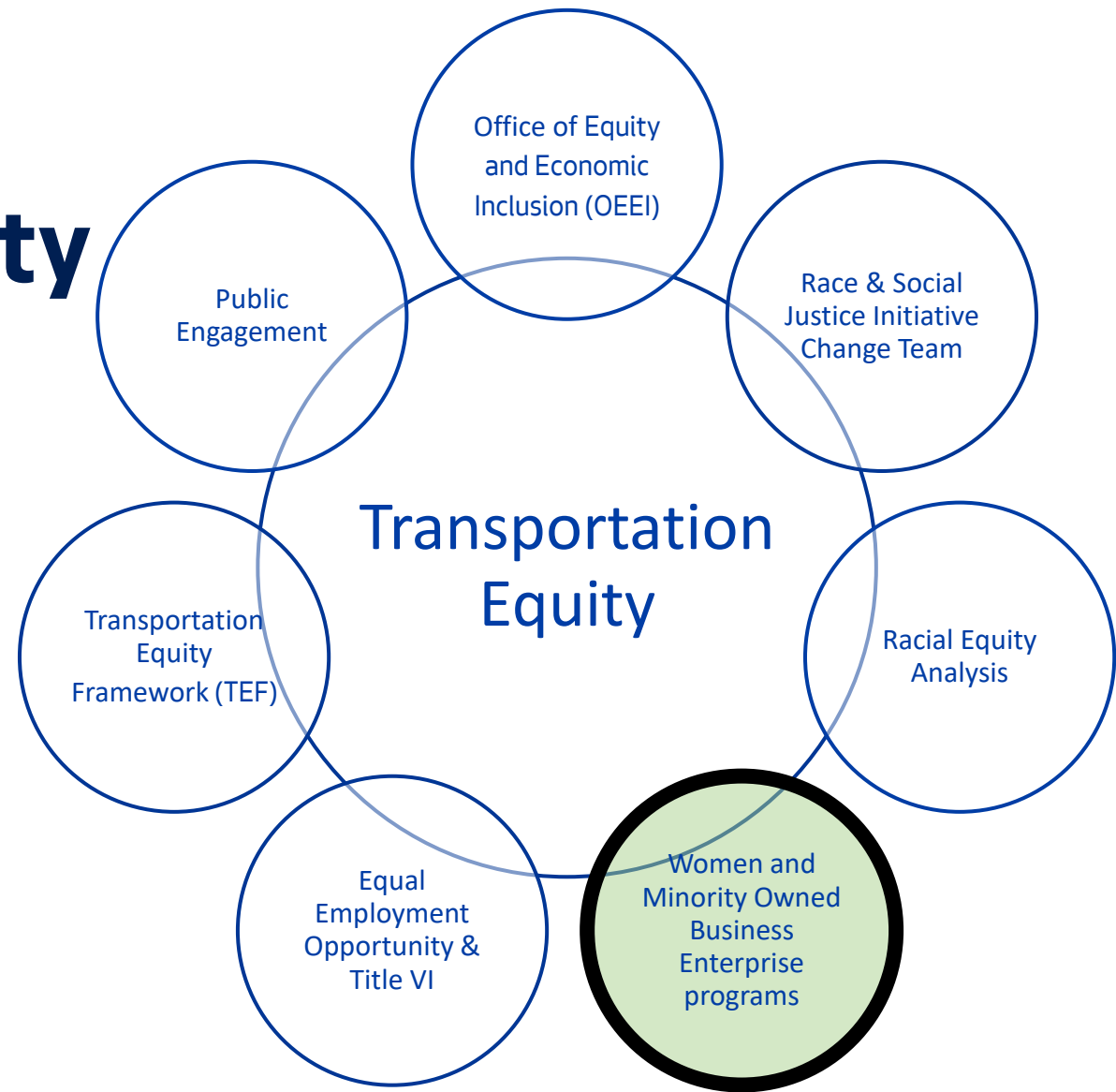


# Highlight: Little Brook Stay Healthy Street Pilot

- Generated through Community Liaison request
- Pay community-based organization to scope and lead outreach
- Build on community lead park visioning project already underway



# SDOT's approach to transportation equity



# SDOT WMBE commitments

- Reach Levy to Move Seattle 23% WMBE goal
  - Currently at a **30%** (over \$109M to WMBE firms)
- Meet 2021 SDOT WMBE Goals (Levy and non-levy combined):
  - 38% consulting, 19% purchasing
- Share upcoming project information with WMBE community
- Host *Working with SDOT* events
- Participate in community outreach events
- Training and support for staff



# Resource Links

- [RSJI website : RACE AND SOCIAL JUSTICE INITIATIVE 2019 – 2021 STRATEGY](#)
- [WMBE webpage](#)
- [Transportation Equity webpage](#)
- [EEO Plan 2021-2025](#)  
[2014-2017 Title VI Report to the Federal Transit Administration](#)
- [2020 Annual Title VI Update & Accomplishment Report](#)
- [OEEI Website](#)

SDOT Youth Transit Ambassador Pilot Program





# Questions and Discussion

